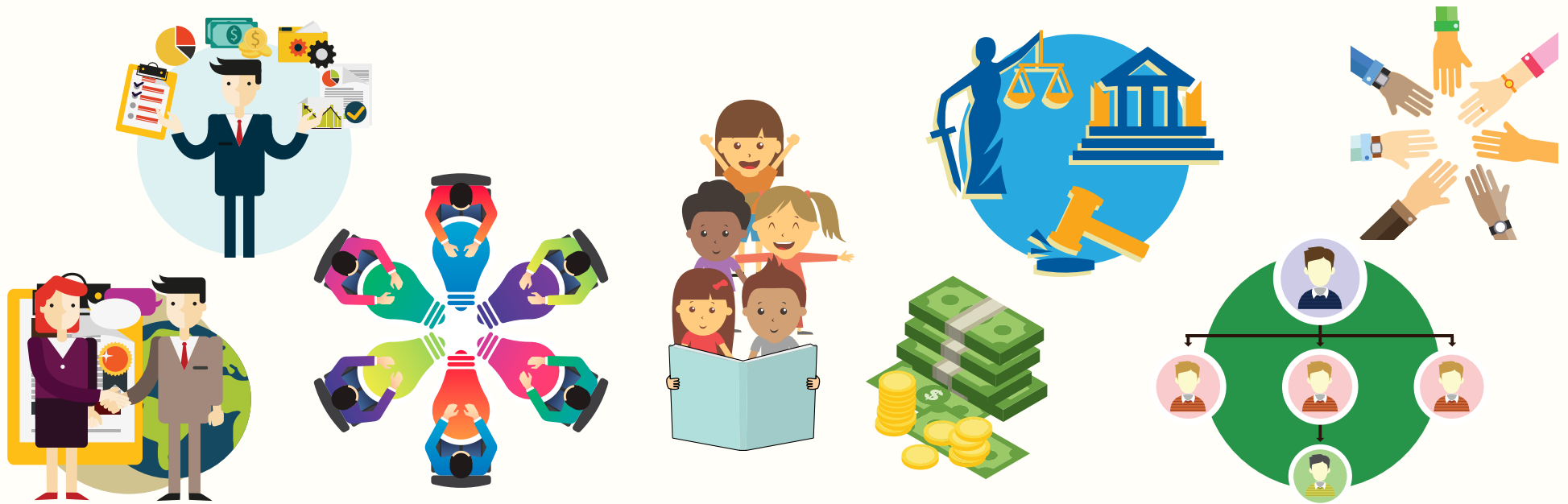


# BEST START REGION 2

## REGIONAL AND LOCAL NETWORK PARTNER ORGANIZATIONS



**1<sup>ST</sup> LA**  
**best start**  
BROADWAY /  
— MANCHESTER —

**1<sup>ST</sup> LA**  
**best start**  
COMPTON /  
— EAST COMPTON —

**1<sup>ST</sup> LA**  
**best start**  
WATTS /  
— WILLOWBROOK —

**1<sup>ST</sup> LA**  
**best start**  
— WEST ATHENS —

## THE REGIONAL AND LOCAL NETWORK PHILOSOPHY

**Community Health Councils** has brought together a team of organizations that work within a guiding framework essential to collaboration and working with community partnerships to achieve:

- Transparent Communication
- Mutual respect • Trauma-Informed • Shared Values
- Equal and Equitable Voice
- Cultural Responsiveness and Competency
- Appreciative inquiry

The regional and local team has demonstrated experience working with parents, residents and organizations in the South Los Angeles region in the areas of capacity building, engagement, education, service delivery, and movement building. They are guided by an appreciative inquiry and trauma-informed approach to working with and in communities. All partners have a demonstrated commitment to engagement by working “bottom up” and ensuring that community input and participation are incorporated throughout all work.

## COMMUNITY HEALTH COUNCILS

### Regional Network Organizations and Local Network Organizations

Local Council Delegations

Regional Task Force

Grantees

Sub-Contractors

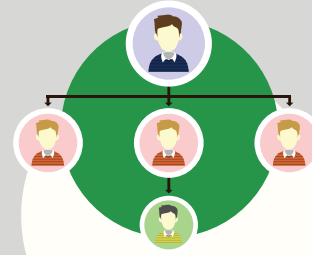
Local Support Teams

# REGIONAL NETWORK ROLES & RESPONSIBILITIES



## CONTRACT ADMINISTRATION

Assumes responsibility for managing the grant with First 5 LA, fulfilling all administrative requirements, managing subcontracts with all partners, and ensuring integrity to Best Start values, parameters and principles.



## MULTI-LEVEL COORDINATION

Coordinates and maximizes opportunities to connect the work of the community partnerships within the region to each other and to similar efforts at the local, regional, and/or countywide levels.



## COORDINATION OF ORGANIZATIONAL CAPACITY BUILDING

Assesses the capacity needs of itself and its subcontractors and providing support as needed to ensure that all parties involved are continually and proactively seeking to improve the performance of their respective roles.



## COLLECTIVE ADVOCACY

Coordinates and supports opportunities to bring together the community partnerships in the region when cross-community efforts are needed in pursuit of common goals or in response to (or support of) external policy or systems change endeavors.



## REGIONAL LEARNING

Facilitates regular learning activities across communities within the region as well as participates in First 5 LA learning and evaluation activities, including the Best Start Learning Agenda.



## REGIONAL RESOURCE MOBILIZATION

Attracts and leverages regional, countywide, state and federal resources (funding, donations, and volunteer time) and relationships to support the work of the community partnerships beyond First 5 LA funding.



• BROADWAY/MANCHESTER • COMPTON/EAST COMPTON  
• WATTS/WILLOWBROOK • WEST ATHENS



# LOCAL NETWORK ROLES & RESPONSIBILITIES



## COORDINATION & SUPPORT

Provides all of the logistical support needed to plan, facilitate and hold community partnership meetings, activities and events. Also monitors the local landscape to identify opportunities for collaboration and integration with similar efforts.



## DATA, LEARNING & IMPROVEMENT

Incorporates the use of data, regular reflection, and learning at the local level and coordinates with the regional network grantee to support regional learning. Also participates in First 5 LA learning and evaluation activities, including the Best Start Learning Agenda.



## CAPACITY BUILDING & LEADERSHIP DEVELOPMENT

Models effective practices, provides real-time coaching and arranges for targeted technical assistance as needed to support individual and collective abilities to influence policies and systems that impact children and families in their community.



## COMMUNICATIONS & OUTREACH

Supports the development and implementation of communications strategies that build the partnerships' brand and visibility regionally and locally.



## COMMUNITY-IDENTIFIED PROJECTS

Supports the ongoing planning, implementation, and reflection of projects identified by the community partnership to achieve the desired community change results.



## RESIDENT AND STAKEHOLDER ENGAGEMENT & ADVOCACY

Supports the development and implementation of strategies that facilitate social connections and engage parents and residents in the work of the community partnership.



## LOCAL RESOURCE MOBILIZATION

Attracts and leverages local resources (funding, donations, volunteer time) and relationships to support the work of the community partnerships beyond First 5 LA funding.











## ABOUT THE REGIONAL AND LOCAL NETWORK PARTNERS



**Community Health Councils (CHC)** has been a convener and facilitator of multi-sector and multi-stakeholder coalitions since 1992. At its inception, CHC was created to address the growing health and healthcare crisis by supporting planning, resource development and policy education for 12 stakeholder councils in South Los Angeles and other underserved and marginalized communities throughout L.A. County. Today, CHC runs a number of issue- and geographic-based coalitions aimed at improving the health and wellbeing of the community. CHC's work is centered on policy and systems change efforts, which have resulted in substantive and successful collective advocacy, including having mobilized all levels of stakeholders on issues from the regulation of urban oil drilling in Baldwin Hills to policies directed to reduce fast-food restaurant density in South LA. Although CHC focuses its coordination on South L.A., it coordinates a wide array of organizations and initiatives at the county and state levels, specifically through its coalition work, serving as a backbone agency for large federal grants and organizational lead for public-private partnership social enterprise ventures.

**Local Council Delegations:** Member delegates are residents of the community who have successfully completed the Best Start South LA Decides Delegate Academy Training and have been cleared to act and vote on behalf of their local council.

**Regional Task Force:** 8 elected resident representatives and 4 elected alternates from local councils who work collectively to advance policy and systems change across the region through South LA Decides community-based grant making programs at a regional and local level.

**Grantees:** Community-based organizations awarded community change funding to impact policy and systems change locally and regionally.

**Sub-Contractors:** Community-based organization and other entities under contract with Community Health Councils (CHC) to impact policy and systems change across the regions as well as address immediate needs.

**Local Support Teams:** Community-based organizations and other entities under contract with CHC to facilitate and support local council meetings in partnerships with elected Regional Task Force members and delegates.