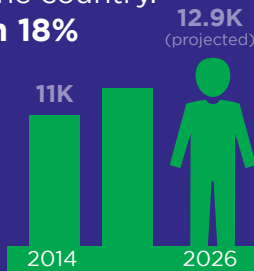


Too many children under 5 years old with or at risk for developmental-behavioral delays are not connected to early intervention services in California

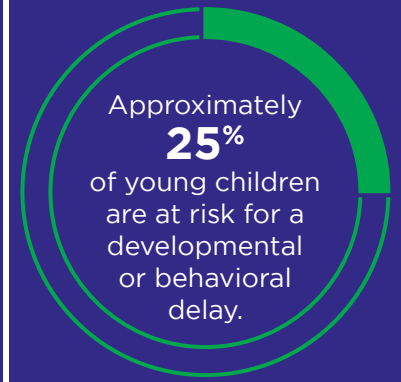


California has one of the greatest unmet needs for speech-language professionals in the country. **There will be an 18% increase in job openings by 2026.**



Toddlers ineligible for early intervention* can still benefit from other supports.

One-quarter of 2 year olds ineligible for early intervention* are not school ready.



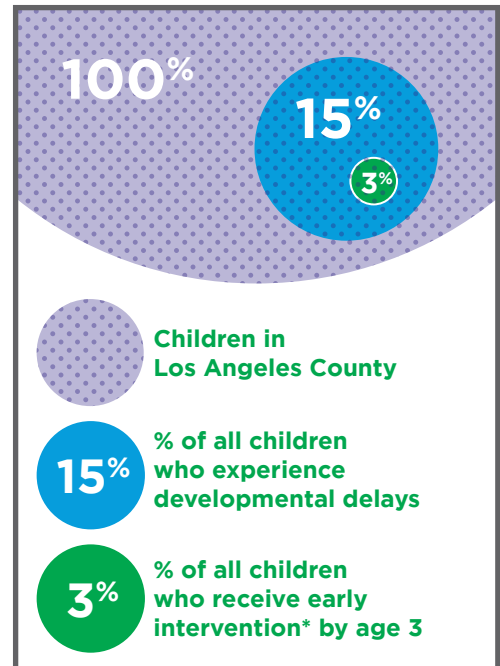
Providers may fail to make a timely referral

Fragmented services, complex eligibility and unclear referral processes

Limited available early intervention services

Families have diverse perceptions and understanding about early intervention services

Barriers to Successful Linkage



When linked to early intervention services before kindergarten, children are more likely to succeed in school and life.



*Early Intervention = IDEA Part C