

Appendix C Context for HMG-LA Pathways

Core Components

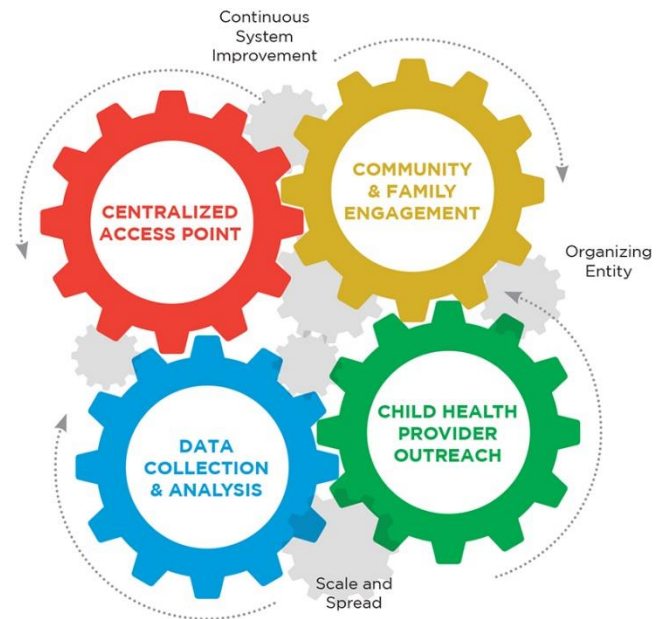
The [Help Me Grow \(HMG\) National Center](#) model outlines four core components that facilitate the development and sustainability of a comprehensive and coordinated system. The four HMG core components are:

1. **Centralized Access Point (CAP):** serves as a telephone or web-based hub to link children and their families to early intervention services and supports to address developmental and behavioral delays or concerns. Families and service providers who access the CAP can receive information and educational materials about child developmental milestones, screenings and referrals to intervention services.

2. **Community and Family Engagement¹ (CFO):** promotes use of HMG and provides networking events for families and service providers to bolster knowledge about healthy child development and locally available and appropriate supports and services.

3. **Child Health Care Provider Outreach (CHPO):** provides training and support to child health providers to promote early identification and intervention (EII) of developmental and behavioral delays. Encourages the use of the HMG CAP to connect children to appropriate services and supports.

4. **Data Collection and Analysis (DCA):** helps identify gaps and barriers in early identification and intervention systems; provides continuous quality improvement to refine the HMG system.



The HMG model’s four core components are designed to be interrelated and interacting for the purpose of strengthening and supporting a reflective and responsive early identification and intervention system. The interactivity of the four components is illustrated in the above visual to the right.

Incremental Implementation Approach: HMG-LA Pathways



During the early design and planning phase, the Help Me Grow-Los Angeles (HMG-LA) Leadership Council recommended HMG-LA adopt an incremental implementation approach for L.A. County that allows for piloting innovative strategies at a local level before scaling

countywide, as well as provides the opportunity to better identify needs of children and families across the county.

¹ The Help Me Grow National model refers to this core component as “Community and Family Outreach,” however the HMG-LA planning members changed the title to “Community and Family Engagement”.

Based on the recommendations, the implementation approach should provide an opportunity to intentionally identify, coordinate and build on existing early identification and intervention infrastructure. The HMG-LA Leadership Council identified the following criteria to guide the selection of HMG-LA Pathways communities:

- Population, administrative and caseload data indicates community need (e.g., priority communities that demonstrate high target population and needs).
- Presence of existing resources, services and infrastructure to build upon.
- Spatial data analysis of existing early child development service, resource and agency locations shows higher cumulative child developmental risk factors.
- Qualitative considerations² such as:
 - Communities, systems and/or settings are ready, are willing and have capacity to participate.
 - Ability to leverage existing place-based efforts.
 - History of being innovative and early adoptors motivated to transform, strengthen and optimize the system.
 - Knowledge of the landscape of early childhood developmental systems and its complexity in L.A. County.
 - Ability to provide ongoing support and capacity to build the HMG-LA infrastructure.

Since release of the recommendations, First 5 LA has continued to do research to inform implementation. Research included a series of discussions with mature HMG affiliate systems across diverse states and California counties; targeted stakeholders' discussions with key systems delivering EII; analysis of existing literature, including studies and white papers; examination of existing prevalence and utilization data; review of findings and learnings from previous investments; and resource mapping. These findings paired with the HMG-LA recommendations and First 5 LA's systems change approach directly shaped the vision, including scope of work and objectives, for HMG-LA Pathways.

The above is adapted from: Harrington, M. J., Nang, G., Newkirk, C., Robin, L., & Tunis, H. (2017). Promoting young children's optimal development: Help Me Grow-Los Angeles early design and planning recommendations from the Leadership Council and workgroup planning members. Los Angeles, CA: First 5 LA. Retrieved from <https://www.first5la.org/files/HelpMeGrow-LA%20Recommendation%20Report.pdf>

² These qualitative considerations were applied to the design of the HMG-LA Pathways RFP.