

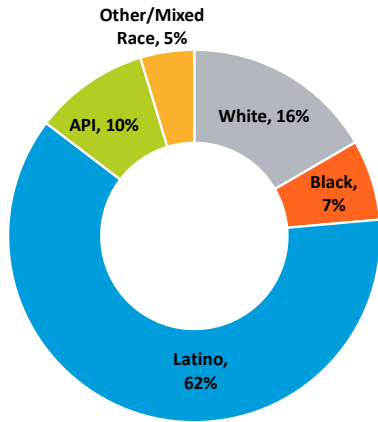
First 5 LA: A Take on Equity

Note: All figures presented here are for Los Angeles County.

Los Angeles' diversity is a major asset in the global economy, but inequities and disparities are holding the region back. To build a more equitable Los Angeles, leaders in the private, public, nonprofit, and philanthropic sectors must commit to putting all children on the path to economic security, healthfulness and academic success through equity-focused strategies and policies to grow good jobs, build capabilities, remove barriers, and expand opportunities for children being left behind.

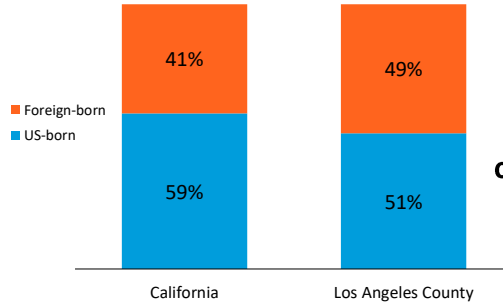
LA kids and parents are more diverse than ever

Children 5 and under by Race/Ethnicity, 2012-2016



79%
of parents with children under five in LA County are people of Color

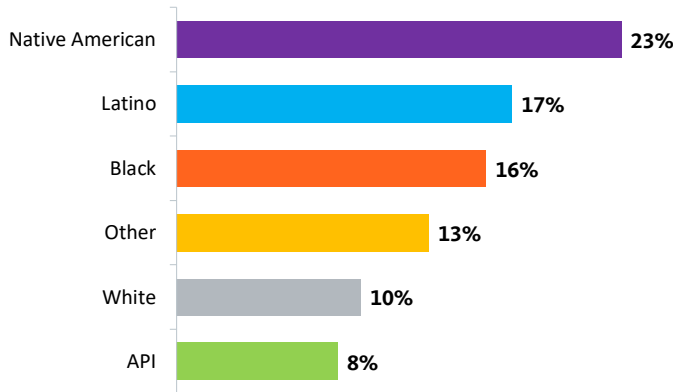
Parents children five and under by Nativity, 2012-2016



67%
Of foreign-born parents with children under five in LA County are not citizens

Inequities threaten the region's long-term economic prosperity

Percent of children 5 and under with at least one parent unemployed by Race/Ethnicity, 2012-2016¹



Over 60% of Black and Latino children under 5 are below 200% of the Federal Poverty Level²

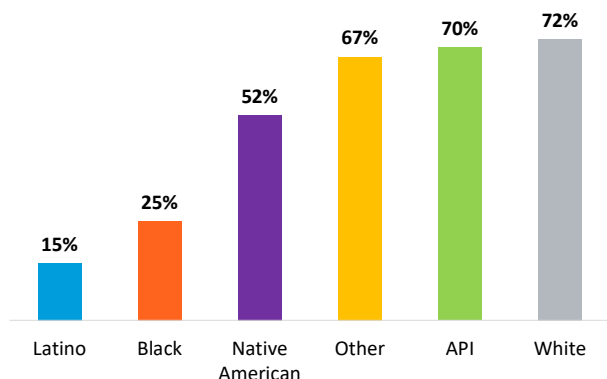
Over 30% of all parents with children under five are in working poverty³

White median household income is over **2x** that of Blacks and Latinos

Health and education gaps persist

Around 33% of parents with children under five have a bachelor's degree or higher but inequities exist

Percent of parents with children under five with a Bachelor's Degree by Race/Ethnicity, 2012-2016⁴



22% of Black children and **19%** of Latino children ages 5 and under are enrolled in pre-k while 27% of whites are enrolled in pre-k

7.2% of all children born in LA County have a low birth weight compared with **6.8%** for California⁵

Infant mortality rates for Black newborns are **3x** higher than their white counterparts⁶

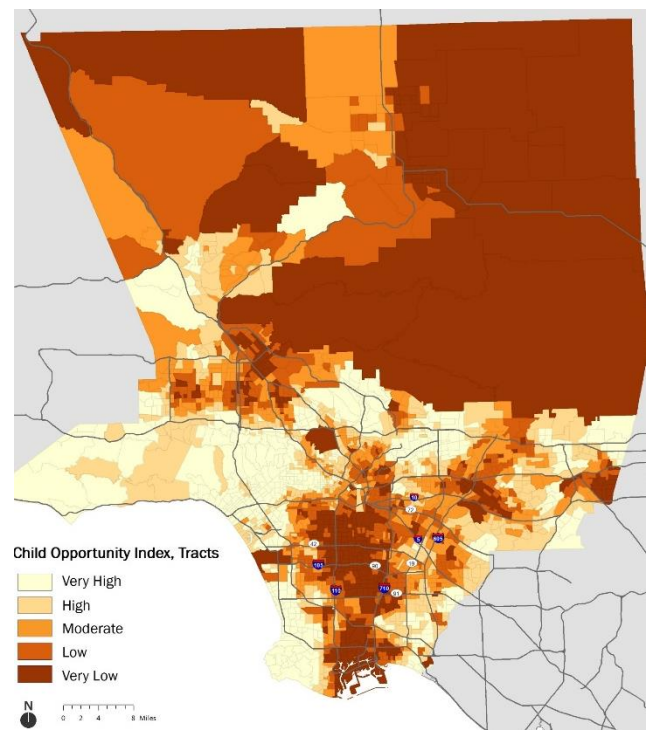
LA children are walled off from opportunity

58% of Black and Latino children under 5 live in areas of high poverty⁷

39% of children 5 and under live in rent burdened households⁸

Child Opportunity Index, 2011-2014⁹

The Child Opportunity Index measures educational, health, environmental, and social/economic opportunity across a region. This measure, shown to the right, indicates large neighborhood disparities in child opportunity across the county particularly concentrated in South and Southeast Los Angeles, suburban communities to the east, parts of the northern San Fernando Valley, and parts of the port and City of Long Beach to the south. According to the index, **72%** of Black children and **69%** of Latino Children under 5 live in 'low' or 'very low' opportunity neighborhoods.



Equity is the path forward

In order for our region to continue prospering we must ensure that regardless of race, gender, socioeconomic status and nativity, children have the following in place:

Economic Vitality - Where **families** including parents or caregivers have the resources and assets they need to support their children including high-quality jobs and the ability to engage in business activity.

Connectedness - Safe, healthy, and engaged **communities** where children and their parents can thrive and are connected to the resources needed to be healthy and productive.

Readiness- Affordable, quality childcare including **early childhood education** and access to quality coordinated services that promote **health**.

Sources:

Unless otherwise noted all figures in this factsheet are based on PolicyLink/PERE analysis of data from the U.S. Census Bureau's 2015 American Community Survey (ACS) 5-Year summary file and 2012-2016 ACS microdata from the Integrated Public Use Microdata Series (IPUMS).

Notes:

1. Universe includes children (0-5) with any civilian, non-institutional, parent, age 16 and over, in the household.
2. Percent of children (0-5) who are below 200% of the poverty level. 200% is used to account for higher cost of living in Los Angeles County.
3. The Universe of 'working poverty' includes children (0-5) with any civilian, non-institutional, parent, age 16 and over, in the household who worked in the last year.
4. Universe includes children (0-5) with any parent (25+) in the household.
5. A child with 'Low Birthweight' includes any child weighing less than 2,500 grams or 5lbs, 8 ounces at birth. Figures based on data from the Centers for Disease Control & Prevention, Natality data on CDC WONDER.
6. Mortality rates include all children born in the calendar year and subsequently died within the following twelve months. Infant mortality rates are based on data reported by the California Dept. of Public Health, Center for Health Statistics, Birth Cohort Files.
7. High poverty areas include any census tract in which over 20% of the population is below 100% of the federal poverty level.
8. Rent Burden is defined as the percent of children (0-5) living in households spending more than 30% of household income on gross rent.
9. The Child Opportunity Index is a composite of indicators across three domains: educational opportunity, health and environmental opportunity, and social and economic opportunity compiled by diversitydatakids.org and the Kirwan Institute for the Study of Race and Ethnicity. The vintage of the underlying indicator data varies, ranging from years 2007 through 2014. The map was created by ranking the census tract level Overall Child Opportunity Index Score into quintiles for the region.